

Wilfred Owen Close Wimbledon, SW19 8SW

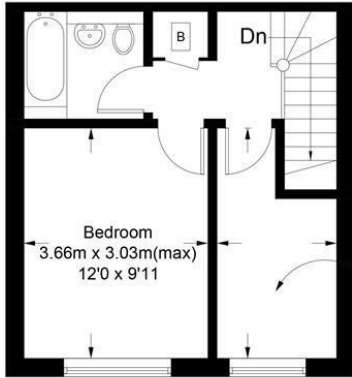
£500,000 Freehold



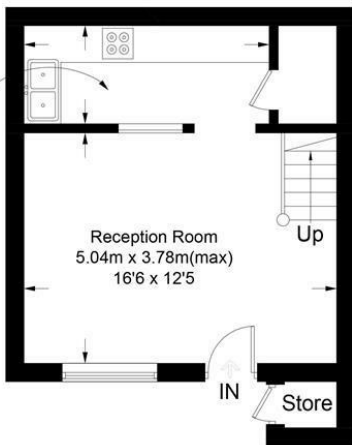
A two double bedroom Freehold house in beautiful condition throughout, situated in the sought after Poets area of Wimbledon, being within easy reach of the Town Centre and Mainline Station. On the ground floor there is an open plan living/dining room and fully fitted modern kitchen with excellent storage space, whilst there are two double bedrooms and family bathroom on the first floor. With a pretty front garden and two allocated parking spaces this would be a fantastic purchase for both first time buyers and rental investors alike.

Wilfred Owen Close, SW19

Approximate Gross Internal Area
 Ground Floor = 28.2 sq m / 303 sq ft
 First Floor = 28.8 sq m / 310 sq ft
 Store = 0.7 sq m / 7 sq ft
 Total = 57.7 m / 620 sq ft



First Floor



Ground Floor

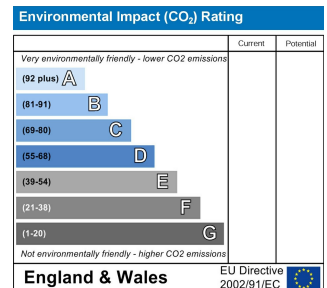
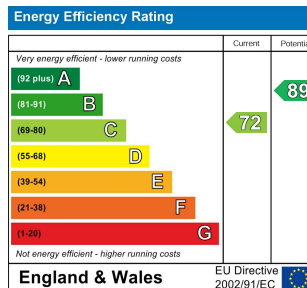
Kitchen
 4.00m x 1.60m(max)
 13'1 x 5'3

Bedroom
 3.64m x 1.96m(max)
 11'11 x 6'5

This floor plan is for representation purposes only and is not drawn to scale. Whilst every attempt has been made to ensure its accuracy measurements are approximate only and should be checked before making any decisions reliant upon them.
 Copyright Bespokeplans.co.uk 2017
 (ID 344754)



- Freehold House
- Two Double Bedrooms
- Open Plan Living/Dining Room
- Poets Location
- Two Allocated Parking Spaces
- Great Condition Throughout
- Excellent Transport Links
- Ideal First Time Purchase
- EPC Rating C
- Council Tax Band D



For Free Mortgage Quote and Best Mortgage Rates, call an Ellisons Mortgage Advisor on 020 8944 9494



Although these particulars are believed to be correct, their accuracy is not guaranteed and they do not form part of any contract.

Celebrating 30 years of successful Sales and Lettings in Merton

